



T^otalPr^oduce[™]
Let's Grow Together

Company Overview



Europe's largest fresh
produce provider

Serving the Retail,
Wholesale &
Foodservice Sectors

Group Cases
Distributed p.a.

400m

Direct Employees

4200

Group Turnover
in 2020.

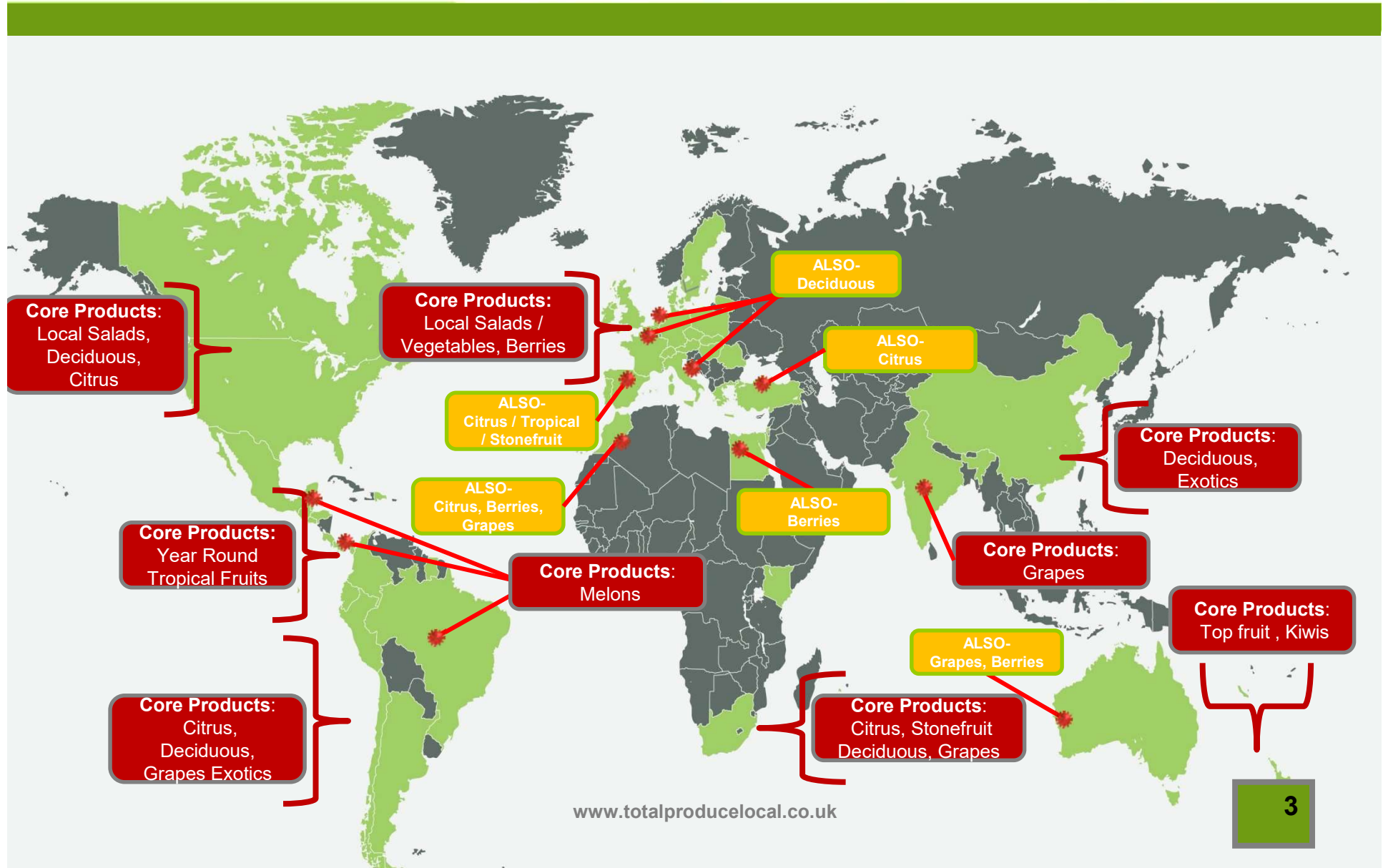
€4.4b

Countries In
Which Group
Operates

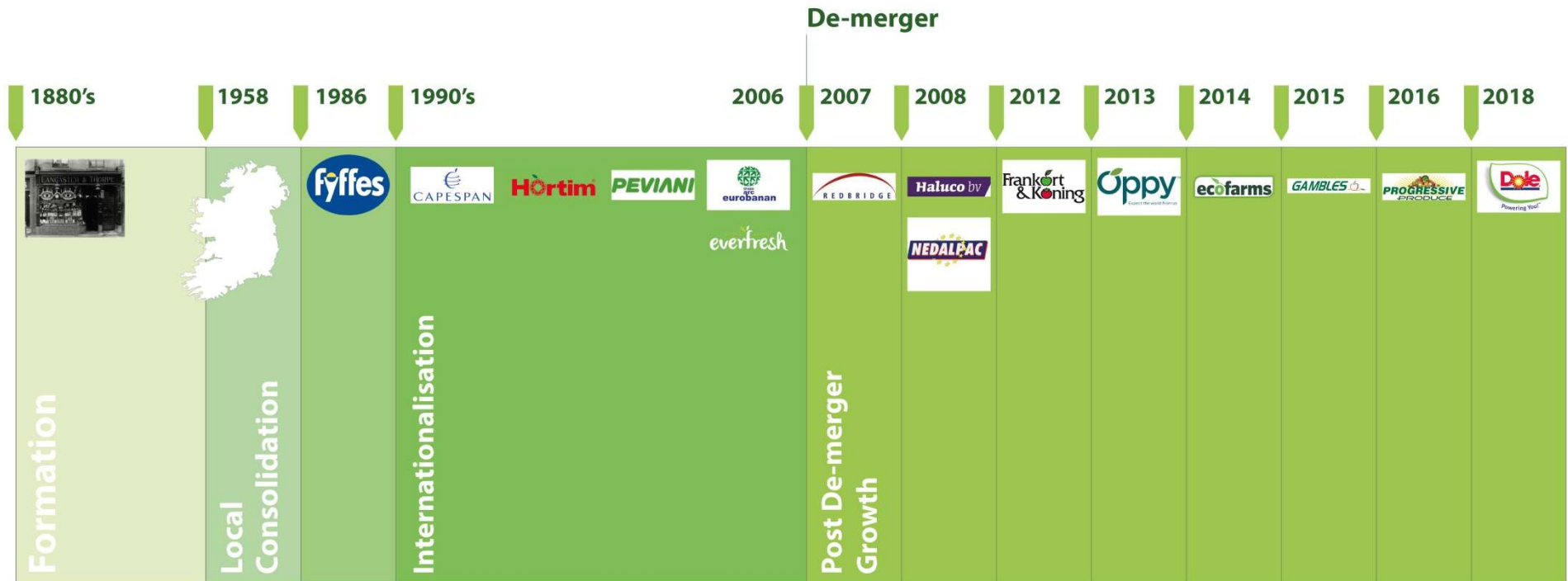
26



Primary Global Sources



Solid Foundations





- Total Produce and Dole Food Company plan to combine in Q3, 2021
- The merger of the companies is the culmination of a 3 year integration
- Combines business 8 billion Euros of sales
- Creates the world's largest fresh produce company
- Global head office to remain in Dublin
- Broadens the group's procurement, product rangem and geographical scope
- Procurement opportunities on a wide range of products



TOTAL IMPORTS £40m Annual Sales

Specialist primary importer
Berries
Spanish salads and veg
Exotics
Imported fruit



TOTAL WHOLESALE £170m Annual Sales

10 sites
Full Range of fresh produce
Volume orders
Trade customers



TOTAL FOODSERVICE £95m Annual Sales

11 sites + 2 Satellite hubs
Fully delivered catering service provider
Fresh, prep, split cases, dairy, Dry goods



Total Produce Foodservice UK

Total Produce Foodservice operates from 11 dedicated depots. The business supplies independent and contract catering customers in both the leisure and cost sectors of catering across a wide variety of outlets.

- 11 Depots across the U.K + 2 Satellite hubs.
- 10,000 delivery locations
- £95 million annual sales.
- 280 vehicles.
- 730 staff.
- 165,000 sq ft warehouse space
- BRC accredited depots.
- Significant growth of sales and platforms over the last 5 year.



Dedicated Account Managers
Daily delivery on fridge vehicles
No minimum order
Local depot network
Flexible service/customer focus
Order until 11pm for next day delivery



BRC Accredited Depots

Full Traceability (supplier terms and conditions)

Quality Management Systems

Comprehensive HACCP Systems

Staff Training

- Food hygiene
- DBS Checked Drivers
- Driver training



- Procure from the UK where possible, regional first then national
- Support small to medium suppliers
- Each local depot procures locally grown produce
- Deal directly with suppliers to maximise grower returns and value for customers
- As per Total Produce Environmental Policy
 - Localised depot network
 - Improving vehicle efficiency
 - Recycling
 - Reduce wastage
 - Minimise plastic waste



Renewable Electricity



The Switched to Renewable Electricity



We're proud to announce
from February 2021

**24 TOTAL PRODUCE FACILITIES
ACROSS THE U.K. WILL BE POWERED
BY 100% RENEWABLE ELECTRICITY SUPPLY**



In Total Produce,
we're deeply committed
to adhering to best
sustainable practices
across all of our operations...



an **ambitious** initiative dedicated
to reducing the greenhouse gas
emissions associated with our
operations across the U.K.
and around the world.

↓ **20%**

Our target is to reduce our carbon footprint
in the U.K. by 20%





Doing our part for the environment

Landfill and recycling

Here at Total Produce we recycle and reuse as many items as possible, such as pallets, crates, cardboard boxes, plastic and waste paper. We have recently introduced reusable crates for many of our deliveries which has considerably reduced our packaging consumption.





Local Growers

By working together with local growers across the country Total Produce is able to source the freshest produce, supporting local growers and also minimising the carbon footprint by collecting product when our drivers are returning to depot.



By Air

Our commitment to minimising carbon footprint goes beyond the UK. Air freight is by far away the most environmentally damaging mode of transport, creating a carbon footprint up to 50 times that of sea freight. Total Produce is actively working with our customers to minimise demand for air freight products.

Bio-degradable Plastics

We are now using Oxo-biodegradable TDPATM Technology Poly Bags in our packaging. These Poly Bags are designed to breakdown in the space of a few months instead of up to 50 years like traditional plastic bags.



Satellite Tracking

All our vehicles are fitted with the latest vehicle tracking technology which goes beyond telling us where all our vehicles are. It also enables us to plan the most efficient routes for our deliveries in both distances and time. This has greatly reduced the overall fuel consumption of our fleet, resulting in much lower emissions.





Paper Packaging

Our latest step in helping the environment is shifting to using more paper packaging for our goods. Paper packaging offers the benefits of being both recyclable and biodegradable, and is also less likely to cause harm to wildlife if discarded outside.



Energy consumption

Total Produce has moved our energy supply over to 100% renewable energy sources and invested over £1 million in replacing all our lighting system with LED lights. We have also invested in an extensive program, updating our refrigeration units with CFC friendly technology.

Local Growers

Oakchurch Farm - Berries



Oakchurch began as a 'pick your own' Strawberry farm in the 1970s and recently started supplying **Total Produce** with many of their wonderful products; with around 400 acres of land Oakchurch grows some of the best Strawberries, Cherries, Raspberries & Runner Beans in Herefordshire and the UK.

Jeremy's knowledge of his produce is second to none; by utilising the latest in farming techniques and technologies, he is able to consistently grow produce at the absolute best quality. Located less than 10 miles from the Hereford Depot, each harvest arrives at Total Produce at within hours of being picked ready for deliveries to our customers the next morning.



Eat Fresh, Stay Local.



TotalProduce
Foodservice

Kier Rogers - Asparagus



Located in the heart of rural Herefordshire, famous for its Apple Cider due to the rich soil lies **Kier Farm**.

In the same soil Kier has been growing its premium Asparagus for over the past 15 years. The Asparagus are grown outdoor in its natural environment in the same nutrient rich soil to obtain the best flavour. It is harvested at its peak, washed and packaged onsite to retain its freshness and delivered to our local depot just a few miles away.

Total Produce is proud to supply this premium produce in its range for our customers.



Eat Fresh, Stay Local.



TotalProduce
Foodservice

TotalProduce
Leicester Foodservice
LOCAL GROWERS & PRODUCERS

16 Sunrise Eggs:
Free Range Eggs

13 Dawndew Salads:
Salad Cress, Watercress, Beansprouts, Pea Shoots, Mixed Salad, Micro Cress

12 Food & Produce Comany:
Courgette, Leeks, Celery, Parsnip, Spring Onion, Plums, Celeriac, Swede, Turnip, Cherry Tomatoes, Bunch Beetroot, Bunch Carrot.

11 Tyrrells Crisps:
Hand cooked crisps made from British Potatoes

10 Euro Fresh Produce:
Blackberries, Raspberries, Blueberries, Wild Mushroom Mix, Cups, Buttons, Flats, Pre pack Mushrooms, Micro Herbs, Edible Flowers, Bramley Apples

9 Haygrove Farm:
Superior British Strawberries, Raspberries, Blackberries

8 Zenith Nurseries:
Rocket, Baby Spinach, Cos, Gem, Lollo Rosso, Oakleaf, Radicchio, Endive, Mix Baby Leaf

7 S.D. Rusch:
Cherry & Round Tomatoes

6 Peter Thorold
Brussel Sprouts, Cauliflower, Savoy & Hispi Cabbage

5 DE Brand & Son:
Cauliflower, Savoy Cabbage, Red/White Cabbage, Iced Broccoli

4 QV Foods:
Potatoes

3 Fresh Growers:
Carrot, Chantany Carrots, Piccolo Parsnip

2 Sherwood Farm:
Loose & Pre Packed Free Range Eggs

1 AB Produce:
Potatoes, Prepared Veg

TotalProduce Leicester Foodservice

Wholesale Market, Leicester, LE2 7SF
Tel: 01162 551 325 www.totalproducelocal.co.uk

UK Growing Seasons



Fruit

	Jan	Feb	Mar	Apr	May	Jun	Jul	Aug	Sep	Oct	Nov	Dec
Apple Bramley												
Cox												
Discovery												
Early Windsor												
Egremont Russet												
Berries Blackberries												
Black/White/Redcurrants												
Blueberries												
Cherries												
Gooseberries												
Raspberries												
Strawberries												
Cobnut												
Damsons												
Pears Comice												
Conference												
Williams'												
Plums Opals, Victoria, Jubilee												
Quince												
Rhubarb Forced												
Outdoor												
Yorkshire												



Salad

	Jan	Feb	Mar	Apr	May	Jun	Jul	Aug	Sep	Oct	Nov	Dec
Celery												
Micro Herbs												
Edible Flowers												
Cucumber												
Lettuce Cos												
Endive/Raddichio												
Iceberg												
Little Gem												
Lollo Rosso												
Oakleaf												
Radish												
Rocket/Baby Leaf												
Spring Onions												
Heritage Tomatoes												



Vegetables

	Jan	Feb	Mar	Apr	May	Jun	Jul	Aug	Sep	Oct	Nov	Dec
Jerusalem Artichoke												
Asparagus												
Beans Broad												
Runner												
Beetroot Raw												
Golden Beetroot												
Gandy Beetroot												
Broccoli Calabrese												
Purple Sprouting												
Tenderstem Broccoli												
Brussel Sprouts												
Cabbage Hasipl												
Red												
Savoy												
Spring Green												
White												
Carrots Loose												
Bunched Carrot												
Chantenay Carrot												
Heritage Bunched Carrot												
Mixed Chantenay												
Cauliflower												
Celeriac												
Chard												
Chilli												
Courgettes												
Fennel												
Garlic Scapes												
Black Garlic												
Wild Garlic												
Kale												
Red Kale												
Kalettes												
Leeks												
Marrow												
Onions White Onions												
Red Onions												
Shallot												
Paranips Washed												
Piccolo paranips												
Peas												
Potatoes Early crop												
Main crop												
Jersey Royals												
Morghew Heritage Potato												
New												
Pumpkins												
Samphire												
Spinach												
Squash												
Sweeds												
Sweetcorn Husk												
Turnips												



TotalProduce MARKET REPORT

Apr 2021

Spring Gems On The Horizon

APRIL UPDATE

Spring is in the air and we all have good reasons to be more cheerful about the months ahead! As a result, here are some things to whet your appetite and to help you plan your menus.

This time of year sees the seasons change and so over the coming month, we will see much more exciting UK grown produce.

Read on to see what's in store. As Nessa from Gavin and Stacey would say "What's occurring?!"

OVERVIEW

This month we will be giving our catering chums a "socially distanced" hearty welcome back, with Covid restrictions gradually lifting and this could not be a better time when it comes to some real seasonal delights.

Throughout April we will see the emergence of some real nuggets of joy which will give the menu planning chaps a welcome headache. It is all about the summer produce calendar slowly opening to provide a multitude of UK and homegrown produce, all positively bursting with flavour!

Also, a few pesky pitfalls to be aware of so please read on or shall we say.... next slide, please!



VEGETABLES

So many things happening in the world of spuds, it would be rude not to start here!

First of the Tunnel **Jersey Royal Potatoes** will be arriving shortly, but please remember the early ones are always expensive! These will come from the covered crops, so expect to pay hefty bucks until the outdoor harvest begins in earnest.

Later this month the first of the **Cyprus Potato** will be available. Grown in distinctive golden soil which really enhances the flavour, they will boil, chip, roast, and make a quite sublime mash.

General **Potato** varieties are still plentiful with prices remaining low.

Really good quality bunched **Beetroot** coming out of **Spain**. Some stunning **Italian Romanesco** on the market, a bit pricey but good quality.

Good **Purple Sprouting** but prices are high and as soon as we have a prolonged period of good weather, the quality will drop. UK quality is in good supply but the quality is average. **Tender Stem Broccoli** is a great alternative.

Portuguese Hispi (Pointed Cabbage) are excellent. **Cornish Spring Greens** are available but very limited supply. **UK Strawed Carrot** will finish towards the end of the month followed by imported. This time of year usually brings a shorter shelf life so beware.

Broccoli is very expensive, this is due to the limited planting back in January/February. This situation should correct itself by the middle/end of April. UK season will not kick in until mid-May at the earliest.



FRUIT

Forced (pink) **Rhubarb** will finish at the end of March/Start of April. We will start the outdoor green rhubarb soon.

Cheddar Vale **Strawberries** & other UK-grown **Strawberries** will start in early April, we've already seen a few superb-looking local Strawberries from Warren's Farm. We will also have Belgium 500g punnets.



Grapes from Peru will be the best option in the coming month or two, as well as Peruvian **Easy Peelers**.

Depending on the weather in Europe, we may see some stone fruit coming through. **Spanish Lemons** are plentiful. **Italian Kiwi** is forecasted to have a difficult harvest.

Blood Oranges have all but finished and will not be back until the end of the year.

Spanish Cherries will also be available towards the end of the month which can be a real showstopper! **UK Apples** have now finished, and European supplies will start to come to an end. South African product will start to arrive this month and prices will be firm but quality excellent.

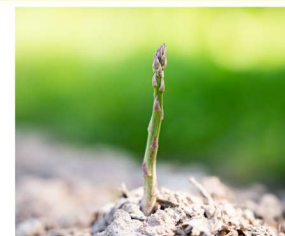
Other products to look out for throughout the month are **Packhams Triumph Pears**, **Brazilian Galla Melons** and perhaps some Spanish **Apricots** towards the end of the month.

SALAD

We will gradually transition on to UK whole head salads throughout the month mainly in the form of **Iceberg**, **Cos** and **Flat Lettuce**.

There are predicted to be fewer **English Tomatoes** around this year, our suppliers suspect this is due to reduced planting because of Covid. However, **UK Tomatoes** are due in the next few weeks, as well as homegrown **Cucumbers**.

Spanish Salads are still running with Dutch also starting, but prices are high. We should see the Spanish start to decline and the Dutch become more plentiful by the middle of April.



Be sure to check out our website & sign up to your local depots mailing list

MARKET REPORT

Quality is always an issue when seasons change over.

EXOTICS

Some really nice Italian/Spanish **Globe Artichokes** and **Rainbow Chard** on the market.

We've been told to expect a shortage of **Ready to Eat Avocados** as the month goes on, this is due to lack of supply coming through.

Look Out For

- Cyprus Potatoes (Spring Crop)
- Tunnel Grown Asparagus
- Jersey Royals
- UK Salads
- UK Tomatoes
- UK Strawberries
- Spanish Cherries
- Italian Broadbeans

TotalProduce
Let's Grow Together



PRODUCT PRICE LIST
Phone: 0116 255 1325
Week Commencing: 29/03/2021
www.totalproducelocal.co.uk

VEGETABLES

DESCRIPTION	C/O	OUTER	PRICE	INNER	PRICE
POTATOES					
MARIS PIPER - DIRTY	UK	25kg	£7.99		
WASHED WHITE POTATO	UK	25kg	£7.99	2kg	£1.99
WASHED RED POTATO	UK	25kg	£11.49	1kg	£0.69
BAKING POTATO	UK	40 count	£7.50	5 pack	£1.99
MID POTATO "STANDARD"	UK	10kg	£7.99	1kg	£1.99
SWEET POTATO	USA	6kg	£11.99	1kg	£2.39
ROOT VEGETABLES					
CARROTS	UK	10kg	£6.99	1kg	£0.79
SWEDE	UK	13kg	£11.99	each	£0.69
CELERIAC	HOL	x6	£9.99	each	£1.69
PARSNIP	UK	5kg	£7.99	1kg	£1.79
LEEKS	UK	5kg	£7.99	1kg	£2.09
ONIONS LARGE	ESP	20kg	£10.99	x3	£0.99
ONIONS COOKING	UK	10kg	£5.99	1kg	£0.79
ONIONS RED	HOL	10kg	£7.99	1kg	£0.89
BRASSICA					
CABBAGE SAVOY	POR	x10	£5.99	each	£0.75
WHITE CABBAGE	NL	10kg	£6.99	2kg	£1.75
RED CABBAGE	NL	10kg	£9.99	2kg	£2.49
CALIFLOWER	UK	x8	£12.99	each	£1.69
BROCCOLI	ESP	6kg	£10.99	each	£1.29
OTHER VEGETABLES					
COURGETTE	ESP	5kg	£10.99	1kg	£2.75
FINE BEANS	KEN	1.5kg	£8.99	500g	£4.25
ASPARAGUS	ITA	x20	£49.99	bunch	£2.99
MANGE TOUT	KEN	1.5kg	£11.99	500g	£5.09
SUGAR SNAP	KEN	1.5kg	£9.99	500g	£5.09
FENNEL	ITA	4kg	£11.99	500g	£1.79
BABY CORN	THA	12x80g	£14.99	80g	£1.25
GARLIC	CHI	1kg	£6.99	2 pack	£1.89
GINGER	CHI	10kg	£45.00	500g	£3.25
BUTTERNUT SQUASH	ESP	10kg	£9.99	each	£1.05

Prices are subject to market fluctuations and at times may change during the week.

TotalProduce
Let's Grow Together



PRODUCT PRICE LIST
Phone: 0116 255 1325
Week Commencing: 29/03/2021
www.totalproducelocal.co.uk

SALAD

DESCRIPTION	C/O	OUTER	PRICE	INNER	PRICE
SALAD HEADS					
ICEBERG LETTUCE	ESP	x10/12	£14.99	each	£1.50
COS LETTUCE	ESP	x10	£14.19	each	£1.49
LOLLO ROSSO/BIONDI	UK	x12		each	£1.49
GEM LETTUCE	ESP			2 pack	£0.85
BABY LEAVES					
MIXED BABY LEAF	E.E.C	6 x 500g	£15.19	500g	£2.69
BABY SPINACH	E.E.C	10 x 200g	£12.49	200g	£1.29
ROQUETTE	E.E.C	6 x 500g	£15.19	500g	£2.59
WATER CRESS	E.E.C	6 x 100g	£8.99	100g	£1.55
TOMATOES					
TOMATO ROUND	NL	6kg	£9.99	1kg	£1.85
TOMATO CHERRY RED	NL	9x250g	£11.99	250g	£1.39
TOMATO CHERRY ON THE VINE	NL	3kg	£13.99		
TOMATO ON THE VINE	NL	5kg	£13.99	1kg	
TOMATO PLUM	NL	6kg	£12.99	1kg	£2.39
BEEF TOMATO	NL	7kg	£14.65	4 each	£2.45
MUSHROOMS					
MUSHROOM CUPS	E.E.C	2.25kg	£5.99	250g	£1.10
MUSHROOM BUTTON	E.E.C	2.25kg	£5.99	500g	£2.09
MUSHROOM FLAT	E.E.C	1.82kg	£5.99	250g	£1.39
MUSHROOM CHESTNUT	E.E.C	2.5kg	£9.50	500g	£3.89
MUSHROOM PORTOBELLO	E.E.C	1.82kg	£7.25		
MUSHROOM MIXED WILD	E.E.C	1kg	£11.99		
OTHER SALADS					
CUCUMBER	NL	x12/14	£10.99	each	£0.95
PEPPER MIXED	NL	10x3	£12.09	3 pack	£1.29
PEPPER RED	NL	5kg	£21.99	4 pack	£4.49
PEPPER GREEN	NL	5kg	£13.49	4 pack	£3.05
PEPPER YELLOW	NL	5kg	£21.99	4 pack	£4.49
AUBERGINE	NL	5kg	£12.49	1kg	£3.19
CELERY	ESP	x12	£14.99	each	£1.29
SPRING ONIONS	MEX			bunch	£0.65
SALAD CRESS	UK	x16	£3.29	punnet	£0.29
FRESH HERBS (Various)	E.E.C			100g Pack	£1.50
COOKED BEETROOT	LIT	18x250g	£9.60	250g	£0.60

Prices are subject to market fluctuations and at times may change during the week.

TotalProduce
Leicester Foodservice

MARCH PROMOTIONS Valid From 01/03/2021 - 31/03/2021

Chorizo
(1.6kg)
£10.99

Sunita Mixed Pitted Olives
(1.8kg)
£9.99

Tartare Sauce
(2.27ltr)
£4.99

Halloumi
(200g)
£1.59

Ground Almonds
(1kg)
£7.99

To order please call 0116 255 135 or
email: ordersleicester@totalproduce.com

TotalProduce
Leicester Foodservice

MARCH PROMOTIONS Valid From 01/03/2021 - 31/03/2021

Silver Spoon Caster Sugar
(2kg)
£2.49

Margetts Apple Sauce
(2.5kg)
£5.49

Chickpeas
(800g)
£0.69

Semolina
(3kg)
£2.99

Gherkins
(2.65kg)
£3.49

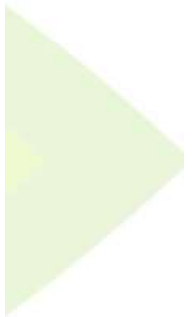
To order please call 0116 255 135 or
email: ordersleicester@totalproduce.com

SUMMARY

“Local at Heart – Global by Nature”

Sustainable mutual growth

Price
Produce
Promotions
Dry Goods
Everards Exclusives
Daily Delivery
Customer Focused





Total Produce™

Let's Grow Together

Name: Anthony O'Mara

Title: Midlands Sales Manager

Mobile: 07968 073323

Email: aomara@totalproduce.com

Website: www.totalproduce.co.uk



**Take A Three Minute
Video Tour Of The Total
Produce Group....**

